

**Silverwood  
Acacia  
trial**

**Master Plot**

Total 504 trees approx in  
three plots

Drawing shows master  
Plot only.  
Layout will be reversed for  
replicate one and  
reversed again for  
replicate two, so that no  
two similar groups are  
adjacent to each other.

Total planting area  
90mx62m

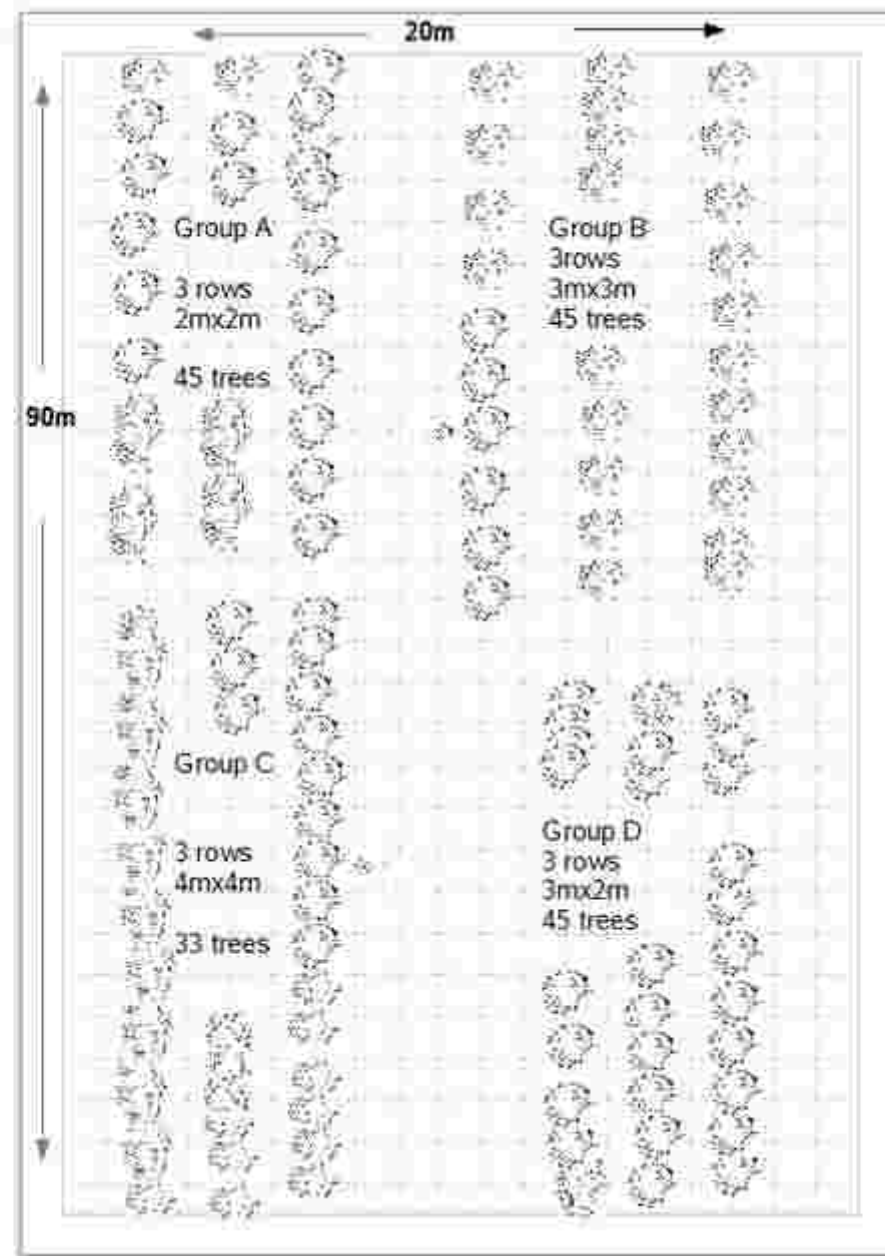
Spacing trial to be  
monitored for four years.

Silviculture trial will then  
commence.

Pre-plant spray with  
Buster herbicide. Post-  
plant spray to be decided.

Species: *Acacia  
dealbata* selected form.

Total area of trial approx  
0.56ha.



Planting order:

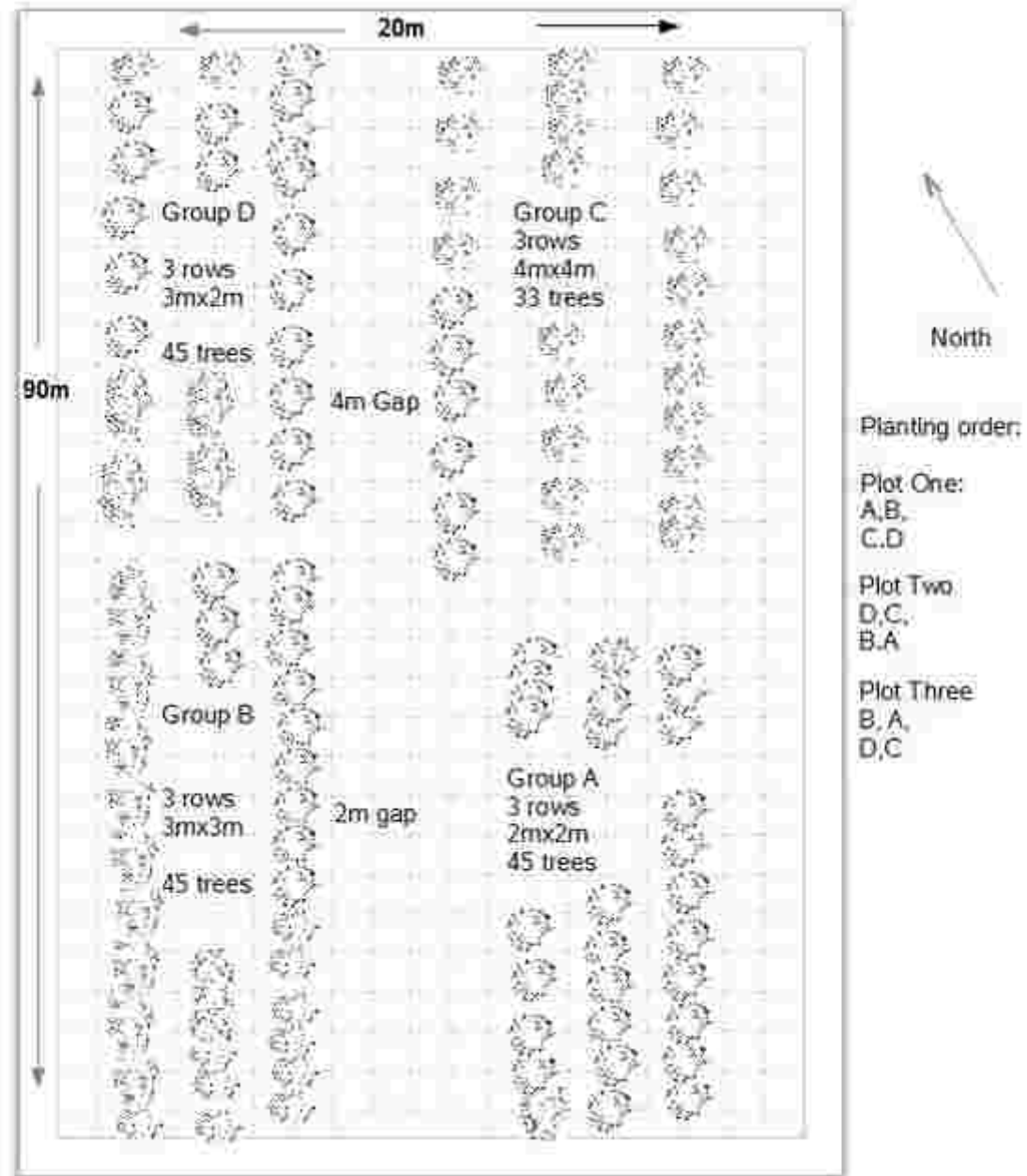
Plot One:  
A,B,  
C,D

Plot Two  
D,C,  
B,A

Plot Three  
B,A,  
D,C

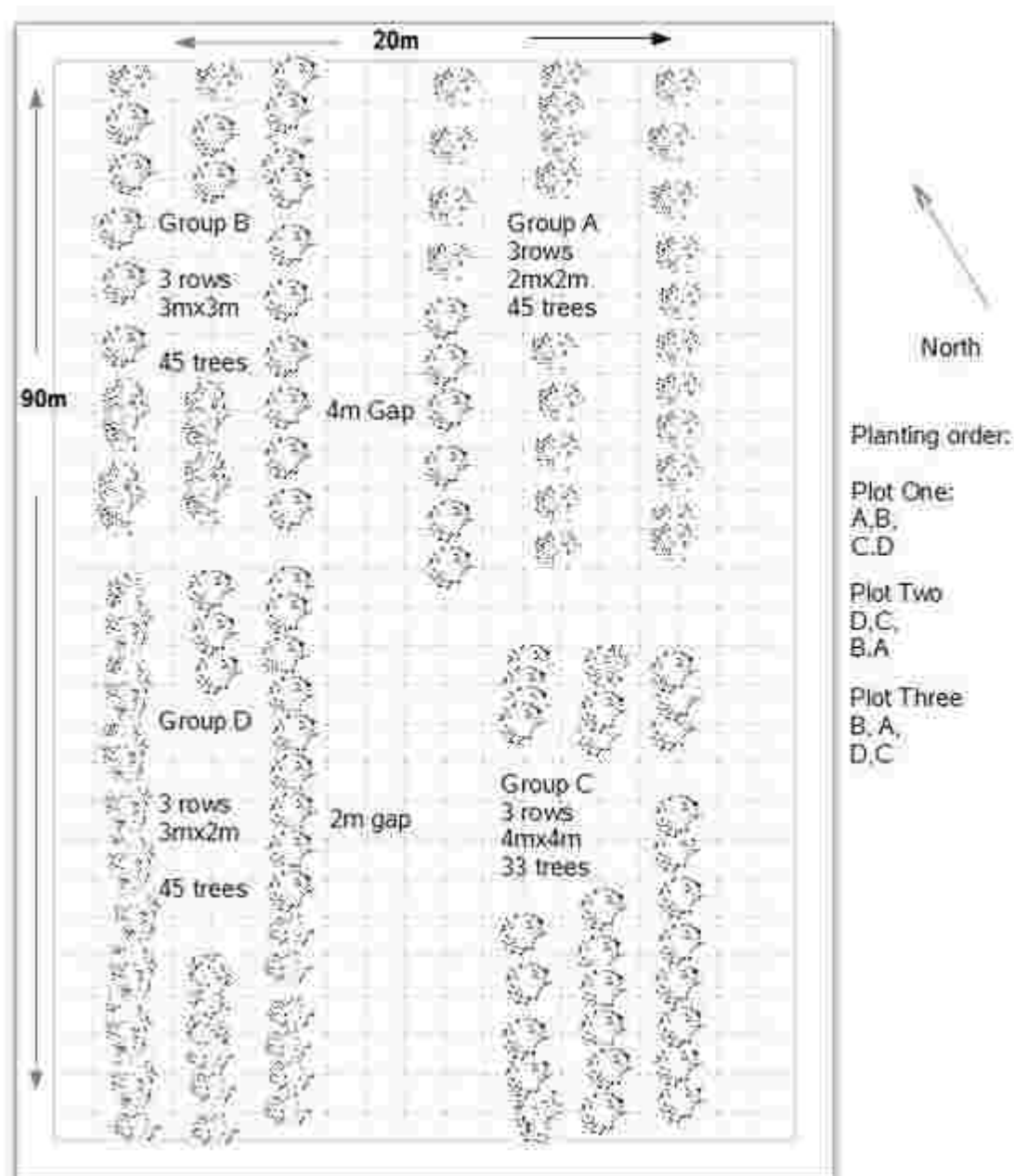
Silverwood  
Acacia  
Trial

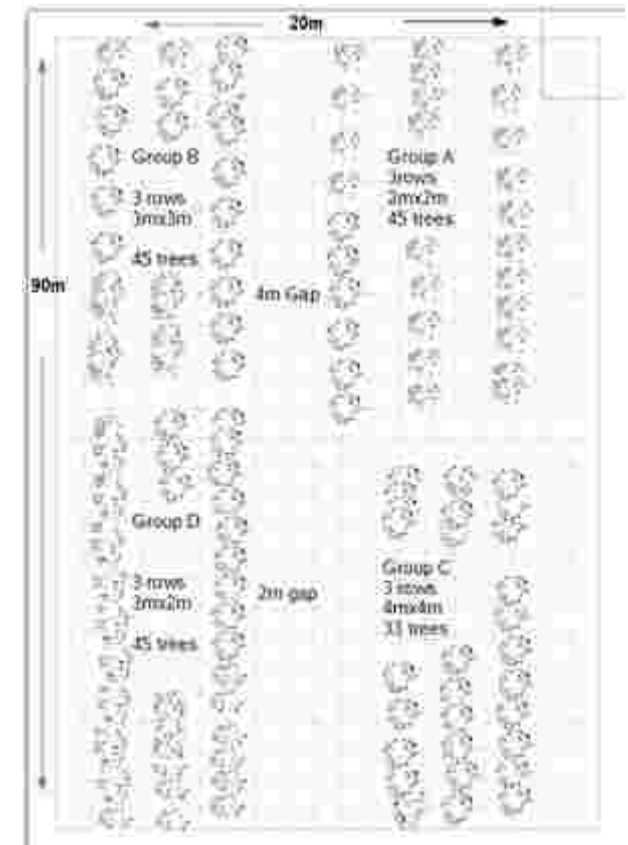
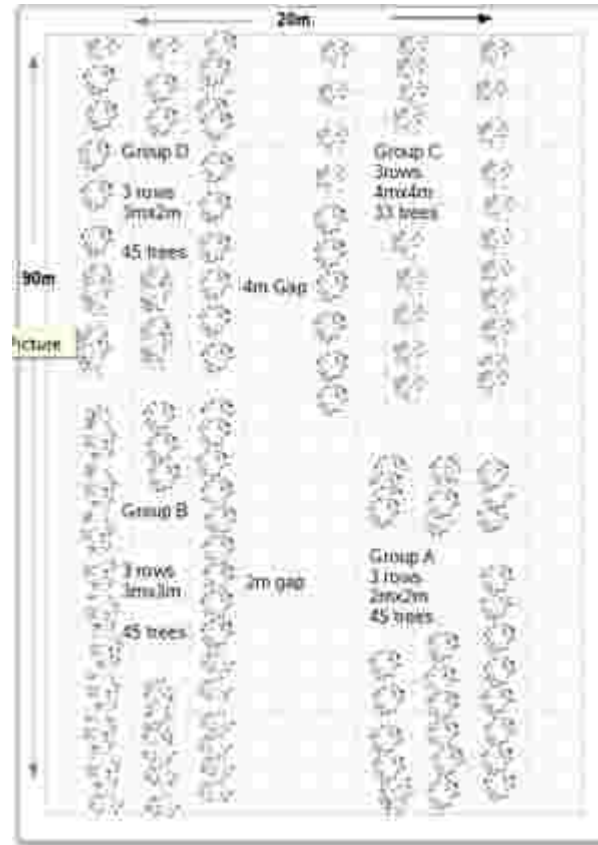
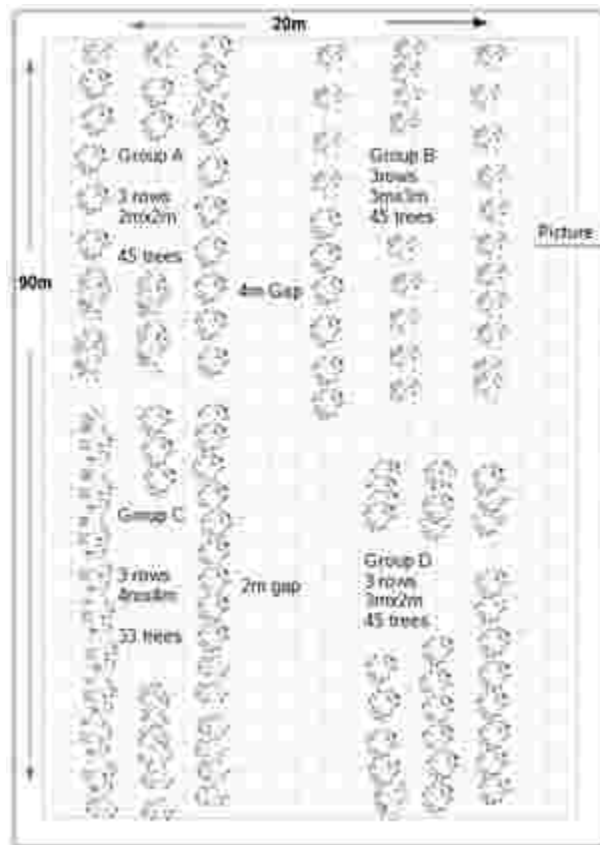
Duplicate One



**Silverwood  
Wattle  
Trial**

**Duplicate Two**





## Silverwood Wattle Trial:

### Arrangement of plots

Group A 45 trees, 2m x 2m; Group B 3m x 3m 45 trees; Group C 3 rows 4m x 4m 33 trees; Group D 3m x 2m 45 trees. All plots three rows.